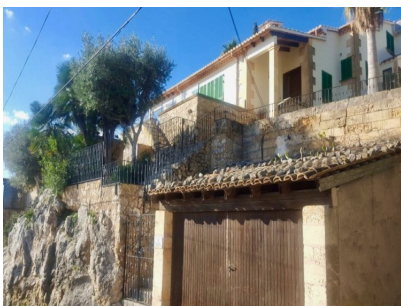




## Port de Pollença

Five Bedrooms | Three Bathrooms



In the residential urbanisation of El Vila - 2,5 km from the heart of Puerto Pollensa, you can find this marvellous villa with great views to the sea and the mountains. The living area of this beautiful villa is of 270 m2 on a plot of 884m2 and has been built on several levels (3). On the main floor,...

### Features:

- Area size: 270sqm
- Land Area size: 884sqm
- Close To Port
- Pool - Private
- Fireplace
- Panoramic
- Kitchen - Fully Fitted
- Garden - Private



# €1.350.000

REF: R1955150

Office Palma: Paseo del Borne 17, 2º, 07012 Palma de Mallorca  
 Office Campanet: Calle Lorenzo Riber 32, 07310 Campanet  
 Office Puerto Pollensa: Paseo Saralegui 38, 07470 Puerto Pollensa  
 Email: [info@mundomediterraneo.com](mailto:info@mundomediterraneo.com)  
 Call: +34 971 723 229