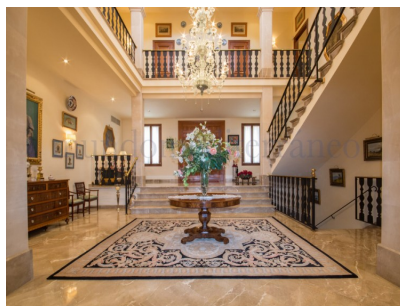




## Son Veri Nou

Five Bedrooms | Five Bathrooms



Unique spacious villa at the edge of the sea. This classical styled villa has been constructed in 2002, with eye for detail and with the use of the best high quality materials, domestic and foreign alike. The villa has four levels: an entertainment area/garage, ground floor, first floor and spacious...

### Features:

- Area size: 880sqm
- Land Area size: 1,000sqm
- Close To Golf
- Close To Sea
- Condition - Excellent
- Pool - Private
- Panoramic
- Lift



# €6.500.000

REF: R2664992

Office Palma: Paseo del Borne 17, 2º, 07012 Palma de Mallorca  
Office Campanet: Calle Lorenzo Riber 32, 07310 Campanet  
Office Puerto Pollensa: Paseo Saralegui 38, 07470 Puerto Pollensa  
Email: [info@mundomediterraneo.com](mailto:info@mundomediterraneo.com)  
Call: +34 971 723 229